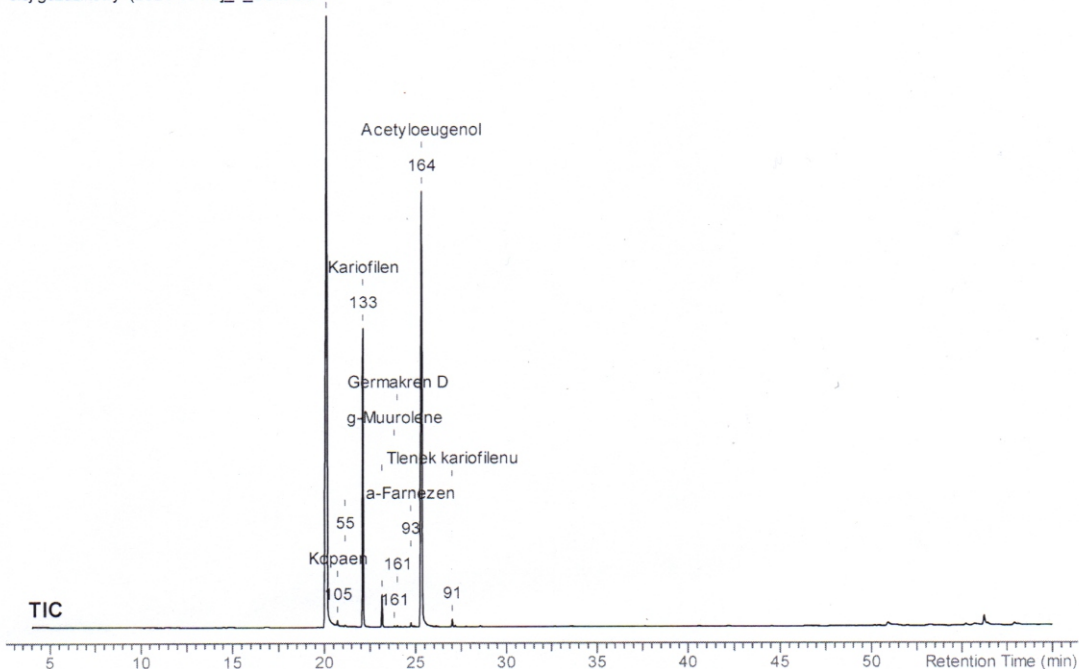




UNIwersytet  
PRZYRODNICZY  
WE WROCLAWIU

KATEDRA TECHNOLOGII ROLNEJ I PRZECHOWALNICTWA  
PRACOWNIA ANALIZY PRODUKTÓW ŻYWNOSCIOWYCH

olej goździkowy (2021-11-13)\_1\_Centroid164



| Nr | tR (min) | Peak Name       | Area (%) | Peak Area (Y units*min) |
|----|----------|-----------------|----------|-------------------------|
| 1  | 20.132   | Eugenol         | 52.241   | 291798.344              |
| 2  | 20.700   | Kopaen          | 0.235    | 1311.914                |
| 3  | 21.118   | cis-lzo Eugenol | 0.072    | 399.732                 |
| 4  | 22.099   | Kariofilen      | 15.147   | 84607.969               |
| 5  | 23.137   | Humulen         | 1.682    | 9395.371                |
| 6  | 23.822   | g-Muurole       | 0.076    | 422.673                 |
| 7  | 23.977   | Germakren D     | 0.084    | 471.592                 |
| 8  | 24.714   | a-Farnezen      | 0.234    | 1304.557                |
| 9  | 25.322   | Acetylo Eugenol | 29.807   | 166488.875              |